

from *Romeo Must Die: The Album*

Try Again

Released in 2000

Down 1/2 step, drop d Tuning

① = G^b ③ = A^b

② = D^b ④ = D^b

Aaliyah

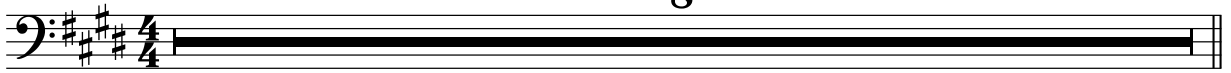
Words and Music by

Stephen Garrett

Timothy Mosley

Moderate Hip Hop ♩ = 92

8



Verse

Musical notation for the Verse section. It consists of two staves of music in bass clef, key signature of three sharps, and 4/4 time. The first staff begins with a C#m chord and ends with a G#m chord. The second staff ends with a 4-measure rest marked with a double bar line and a slash.

Chorus

Musical notation for the Chorus section. It consists of four staves of music in bass clef, key signature of three sharps, and 4/4 time. The first staff begins with a C#m chord and ends with a G#m chord. The second staff begins with a C#m chord. The third staff begins with a G#m chord and is labeled "To Coda".

Verse

Musical notation for the second Verse section. It consists of two staves of music in bass clef, key signature of three sharps, and 4/4 time. The first staff begins with a 4-measure rest and a C#m chord. The second staff begins with a G#m chord and is labeled "D.S. al Coda".



Bridge

Musical notation for the Bridge section. It consists of two staves of music in bass clef, key signature of three sharps, and 4/4 time. The first staff begins with a C#m chord. The second staff begins with a G#m chord and ends with a C#m chord, followed by a double bar line.

V.S.

Musical staff with bass clef, key signature of three sharps (F#, C#, G#), and a G#m chord marking above the staff.

Chorus

Musical staff with bass clef, key signature of three sharps, C#m and G#m chord markings, and a repeat sign.

Musical staff with bass clef, key signature of three sharps, and a 4-measure rest.

Interlude

Musical staff with bass clef, key signature of three sharps, C#m and G#m chord markings, and a repeat sign.

Musical staff with bass clef, key signature of three sharps, and a 4-measure rest.

Chorus

Outro

Musical staff with bass clef, key signature of three sharps, an 8-measure rest, C#m chord marking, and "w/ LPF" text.

Musical staff with bass clef, key signature of three sharps, G#m chord marking, and "open Filter" text with a wedge symbol.

Musical staff with bass clef, key signature of three sharps, and two 4-measure rests.

Fade Out